

The logo for Las Vegas Pride. The words "LAS VEGAS" are in white, uppercase, sans-serif font. Below them, the word "PRIDE" is in a large, bold, sans-serif font, with each letter colored in a different color of the rainbow: P (red), R (orange), I (yellow), D (green), and E (blue).

L A S V E G A S
PRIDE

WELCOME!

PRIDE Night Parade Meeting
Wednesday,
September 29, 2021

Parade Staff

- ❖ Parade Chairman
 - ❖ Clair Koetitz
- ❖ Script Writing/Entry Coordinators
 - ❖ Lyndon Marquez and Clair Koetitz
- ❖ Parade Push Out
- ❖ Parade Starter
- ❖ Stage Manager
 - ❖ Lucas Rangel
- ❖ Parade Breakdown
- ❖ Volunteers

Required Forms

❖ **Contingent Application**

- ❖ Your basic application- every entry must fill out this form

❖ **Hold Harmless**

- ❖ If you have a motorized vehicle in your entry you must fill out this form
- ❖ (1 form for each driver and vehicle)

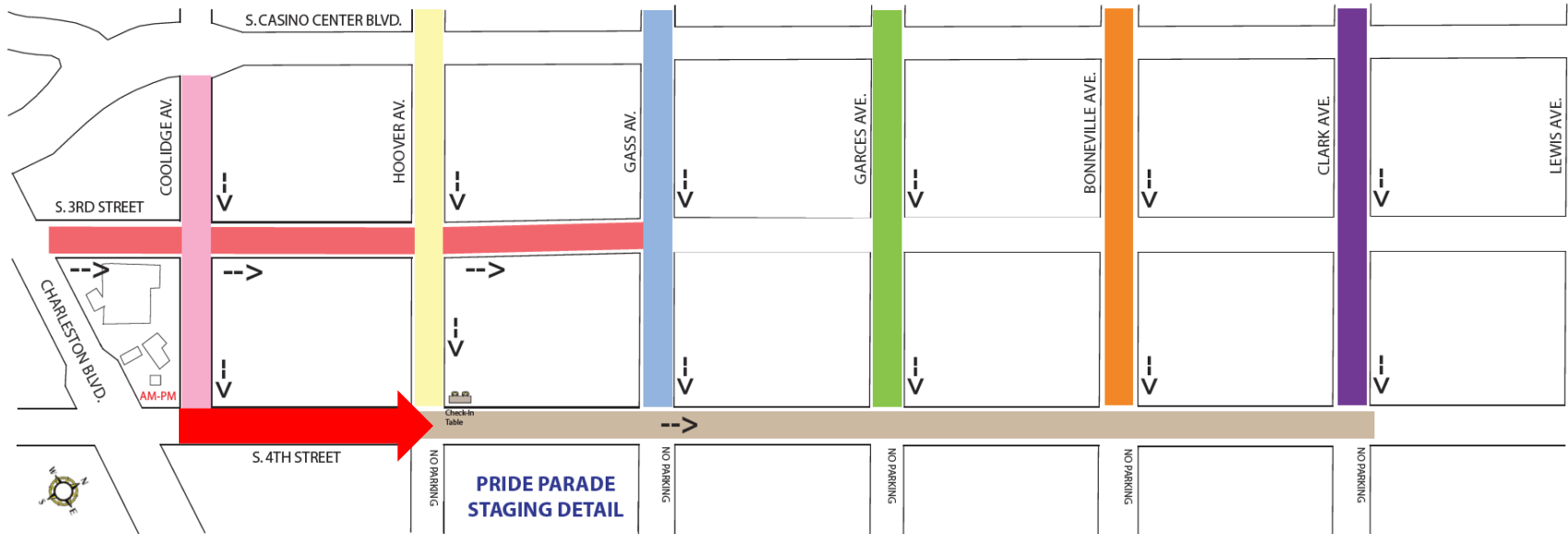
❖ **Wheel Walkers / Contingent Liaisons**

- ❖ Wheel Walkers - guides for float drivers on the parade route
- ❖ Contingent Liaisons - leads for each walking group
 - ❖ 1 liaison for every 25 people in the group

❖ **Contingent Description/Grandstand Statement**

- ❖ Basic information about your group
- ❖ Contingent Description, what is your group doing?
- ❖ What the announcer will say about your group from the main stage

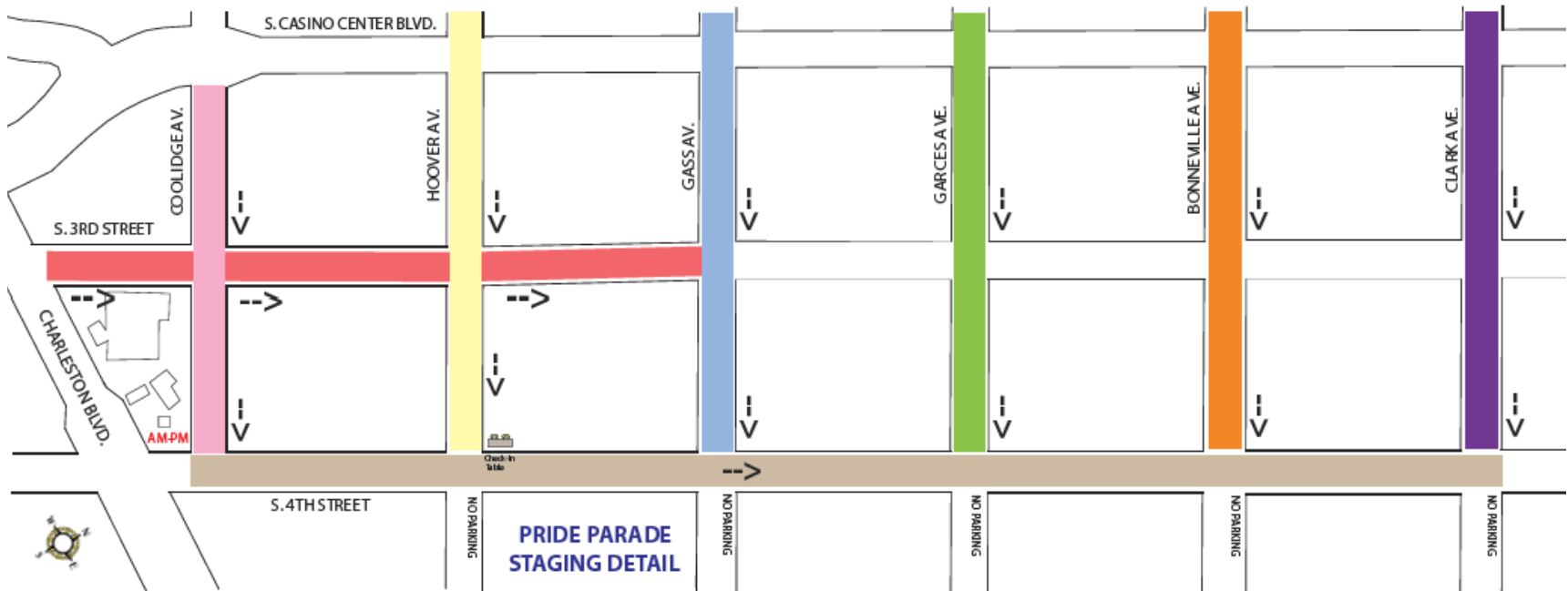
Staging Area Only Entrance



LAS VEGAS PRIDE PARADE STAGING PLAN

PUSH OUT TO CLARK ST. BEGINS AT 6:30PM

Staging Area Details

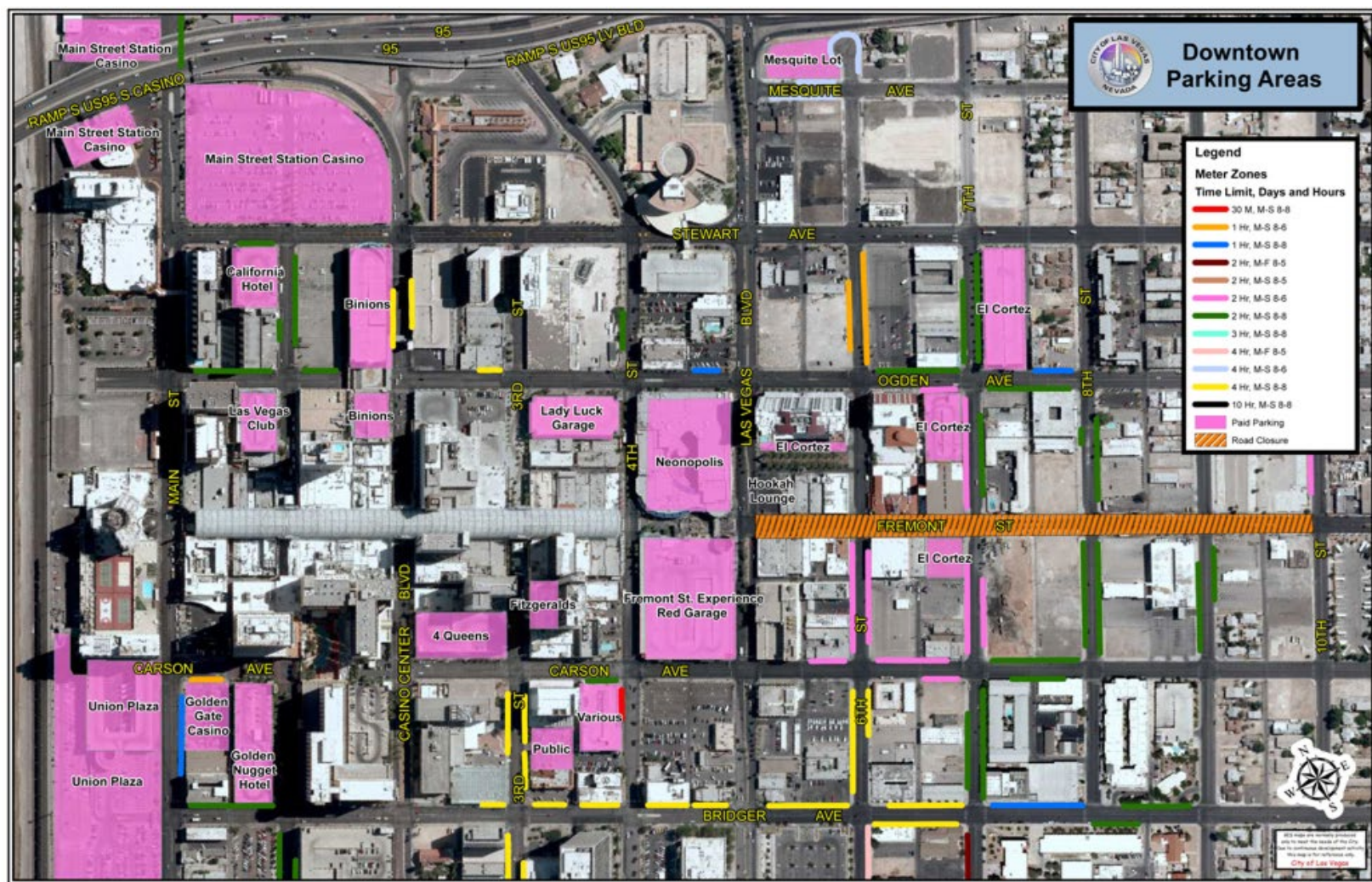


Parking

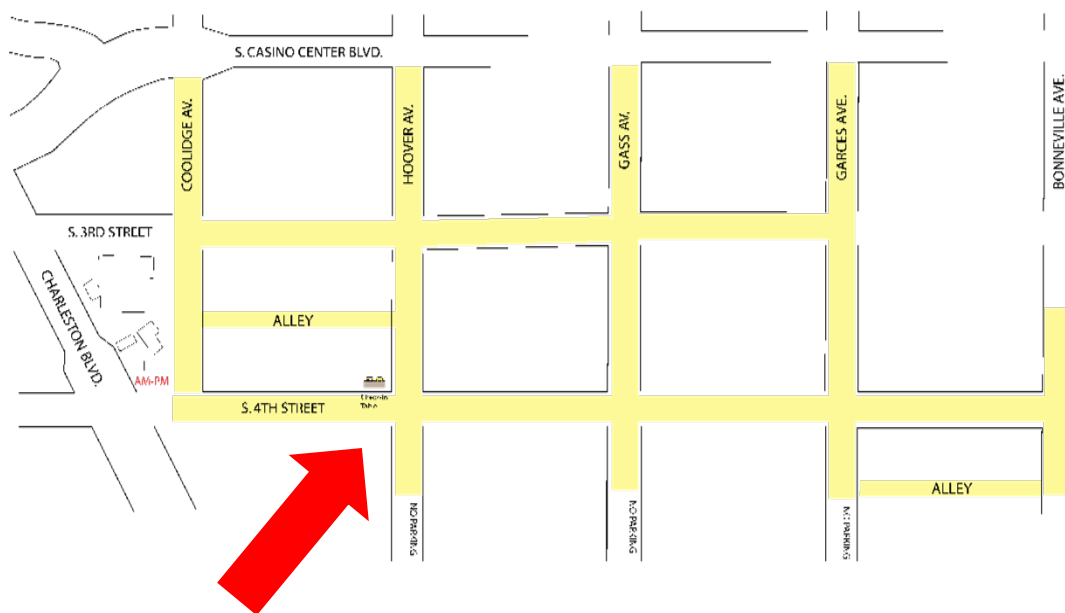
There is no parking allowed at the staging area - anyone who parks in private parking areas will be towed or booted - this is your warning!

We suggest you come early and park at a property at the Fremont St. Experience and walk to Charleston Blvd or use Paid parking south of the Charleston on 4th St .

Additional Parking



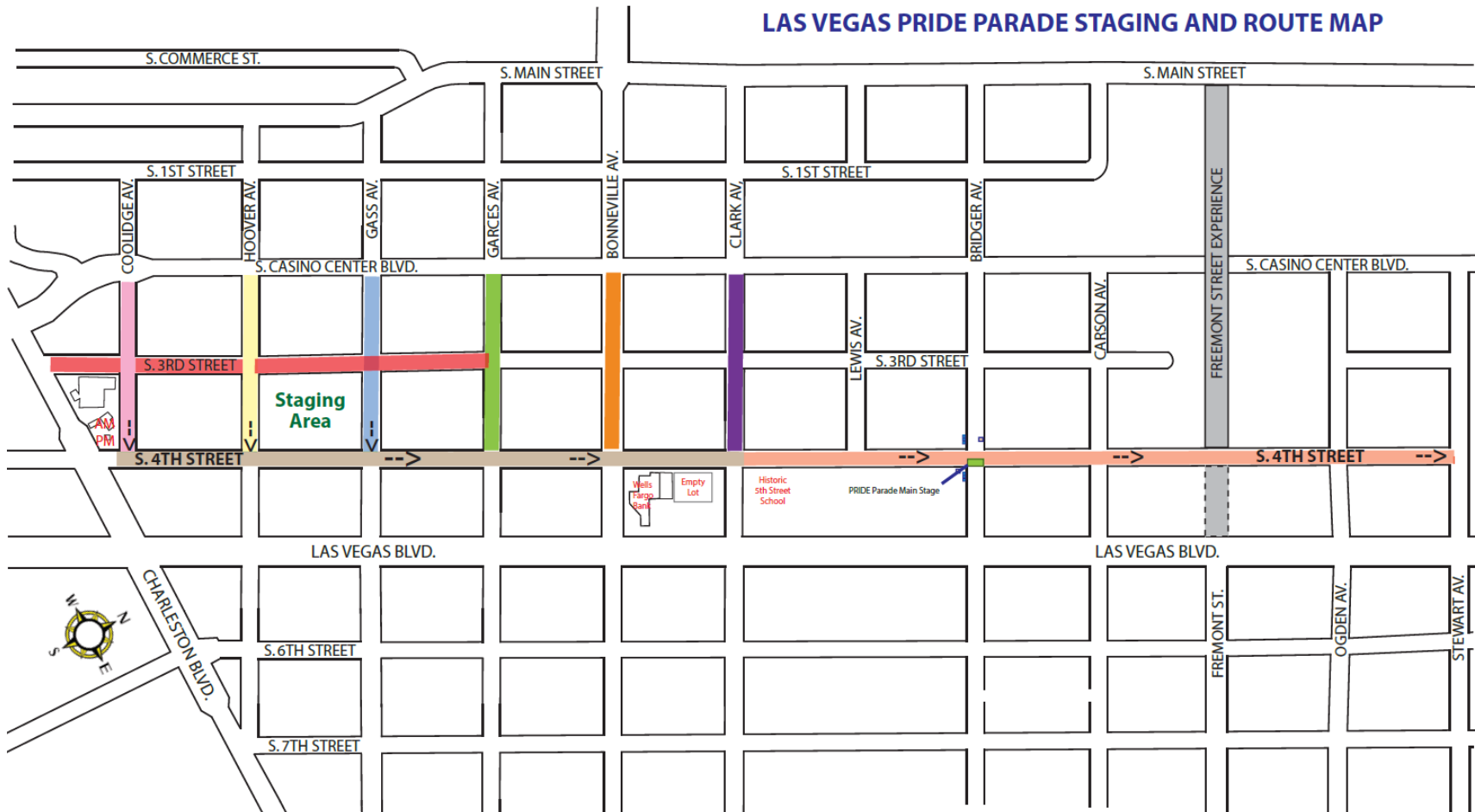
Check In



- ❖ Check in point is on the northwest corner of 4th St & Hoover
- ❖ Check in will open at 4:00pm for all entries
- ❖ Check in will close at 6:30- anyone after 6:30 will be bumped to the back of the parade.
- ❖ Push out begins at 7:30pm

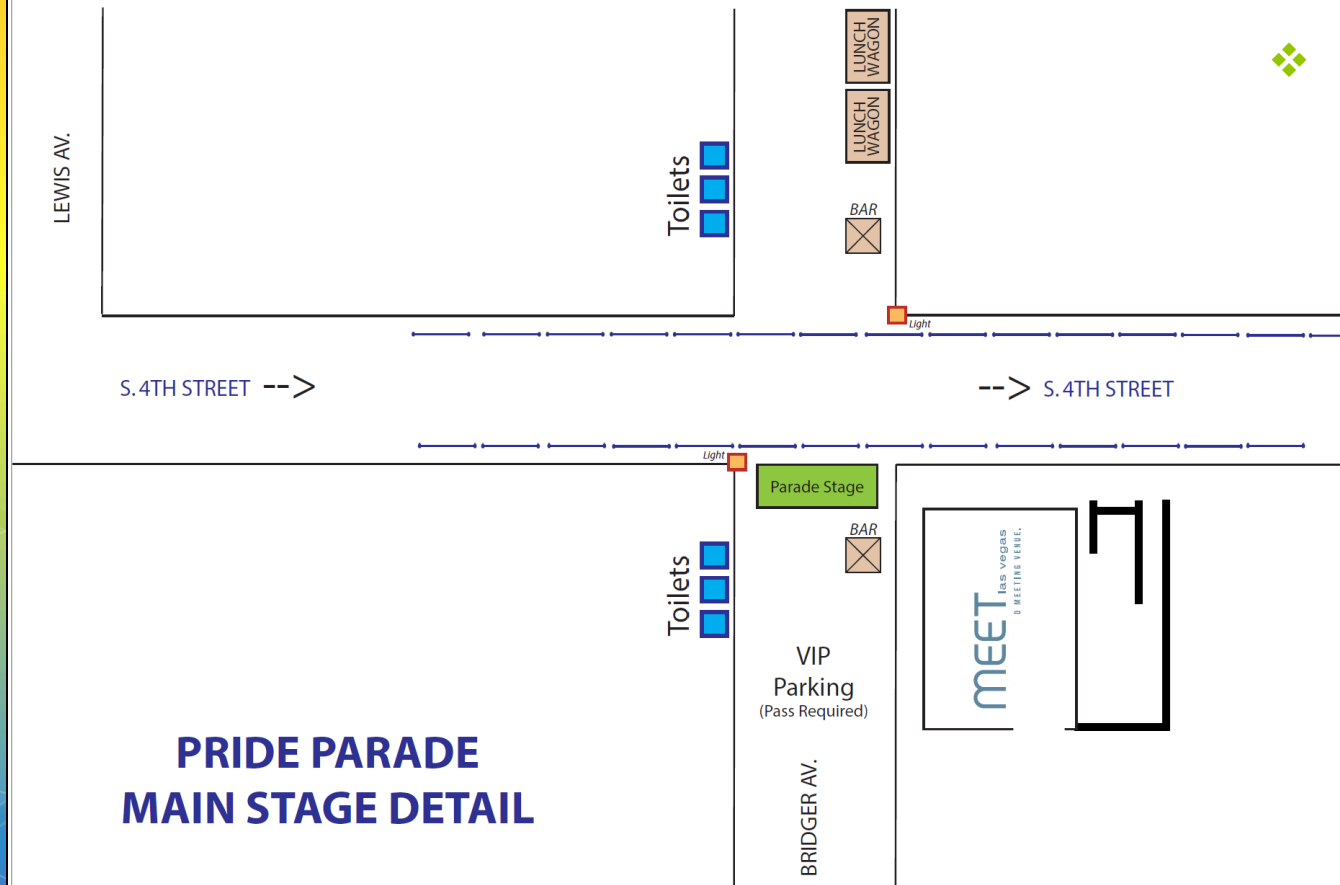
Parade Route Map

LAS VEGAS PRIDE PARADE STAGING AND ROUTE MAP

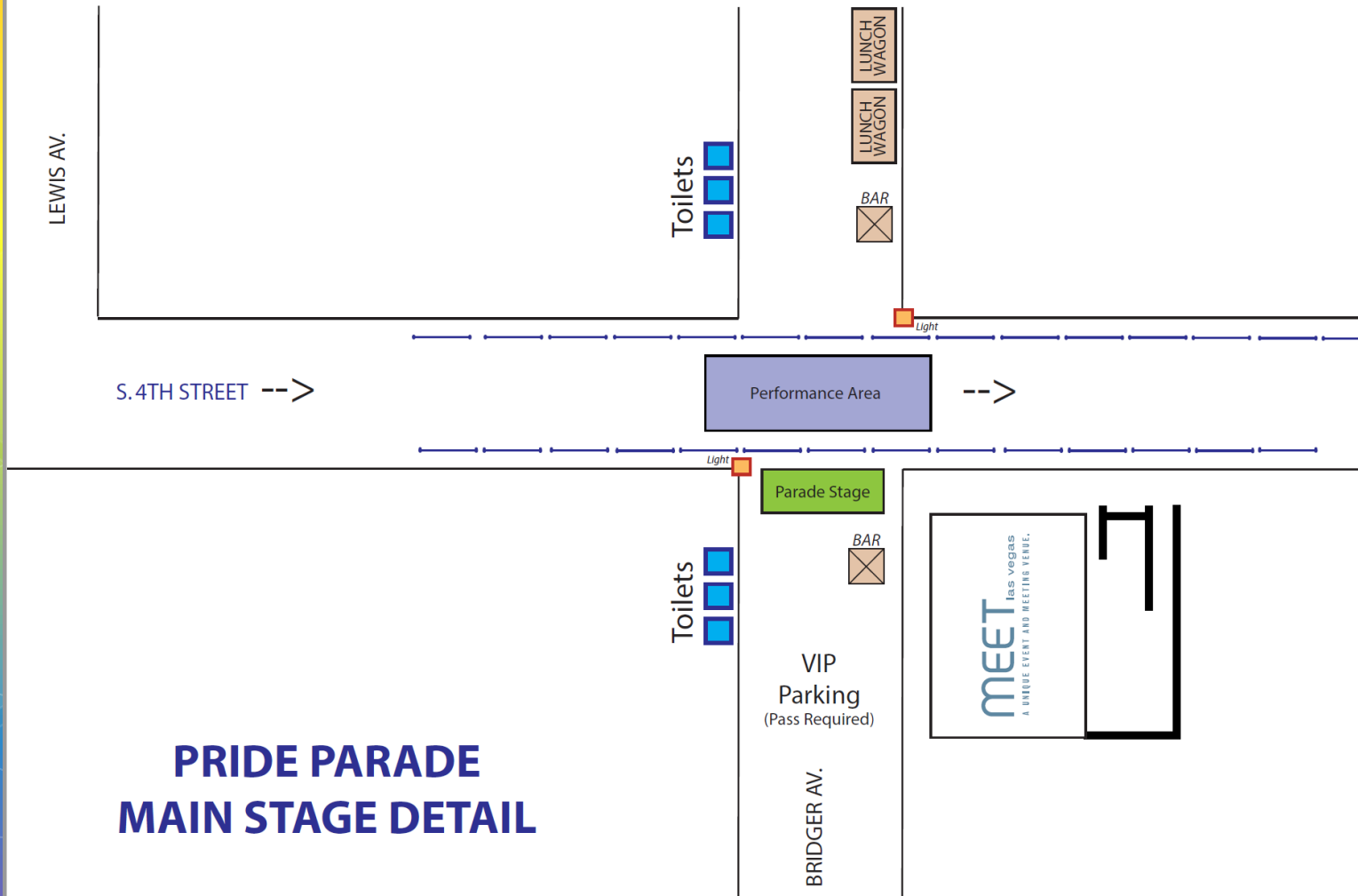


Parade Main Stage

❖ Parade
Pre-Show at
7:00pm



Performance Area Detail



Parade Hosts

- ❖ Andrew Ryan
- ❖ Jimmy Emerson

Parade Judges

- ❖ Jim McMichael - LVCVA
- ❖ Krista Whitley - NASD
- ❖ Jason Flatt - UNLV / TransPride Center
- ❖ Nicole Williams - House of Vegas Pride
- ❖ Cindi Hall - Womyns Fest
- ❖ Antioco Carillo - AFAN
- ❖ Lewis Williams - Las Vegas PRIDE Associate Board

Parade Judging

- ❖ Judging occurs at Parade Grandstand in the following categories:
- ❖ Originality - 1 to 10
 - ❖ Concept of overall unit (homemade vs. store bought)
- ❖ Presentation - 1 to 10
 - ❖ Overall visual appeal
- ❖ Showmanship - 1 to 10
 - ❖ Group unity, smiling, working the crowd, having fun
- ❖ Use of Lights - 1 to 10
 - ❖ Effective use of lights
- ❖ Rainbow Award (PRIDE) - 1 to 10
 - ❖ Best use of rainbow colors - red, orange, yellow, green, blue, and purple
- ❖ Drag it Out - 1 to 10
 - ❖ Drag Queens & Kings
- ❖ Overall Impression - 1 to 10
 - ❖ The "WOW" Factor

PRIDE Parade Awards

- ❖ Best Walking/Marching Entry - Commercial
- ❖ Best Walking/Marching Entry - Non-commercial
- ❖ Best Decorated Vehicle - Commercial
- ❖ Best Decorated Vehicle - Non-commercial
- ❖ Best Float - Commercial
- ❖ Best Float - Non-commercial
- ❖ Rainbow Award - Best Use of PRIDE (Rainbow) Colors
- ❖ Painted for the Gods Award - Best Drag Entry
- ❖ Diversity Award - Celebrating the LGBT Community
- ❖ You Light Up My Life Award - Best Use of Lighting
- ❖ Community Ally Award - Best LGBT Community Supporter
- ❖ Hot Wheels Award - Best Motorcycle/Car Club
- ❖ Grand Marshall Award - Best Overall Decorated Vehicle
- ❖ Parade Director Award - Best Overall Float
- ❖ Grand Diva Award - Best Overall Parade Entry

Parade Awards

- ❖ Award winners will be announced on the PRIDE Festival Stage
- ❖ Saturday, October 09, 2021 at 3:00 PM
- ❖ Awards will be available in a digital format for online celebration as well

Number Placement



Number Placement



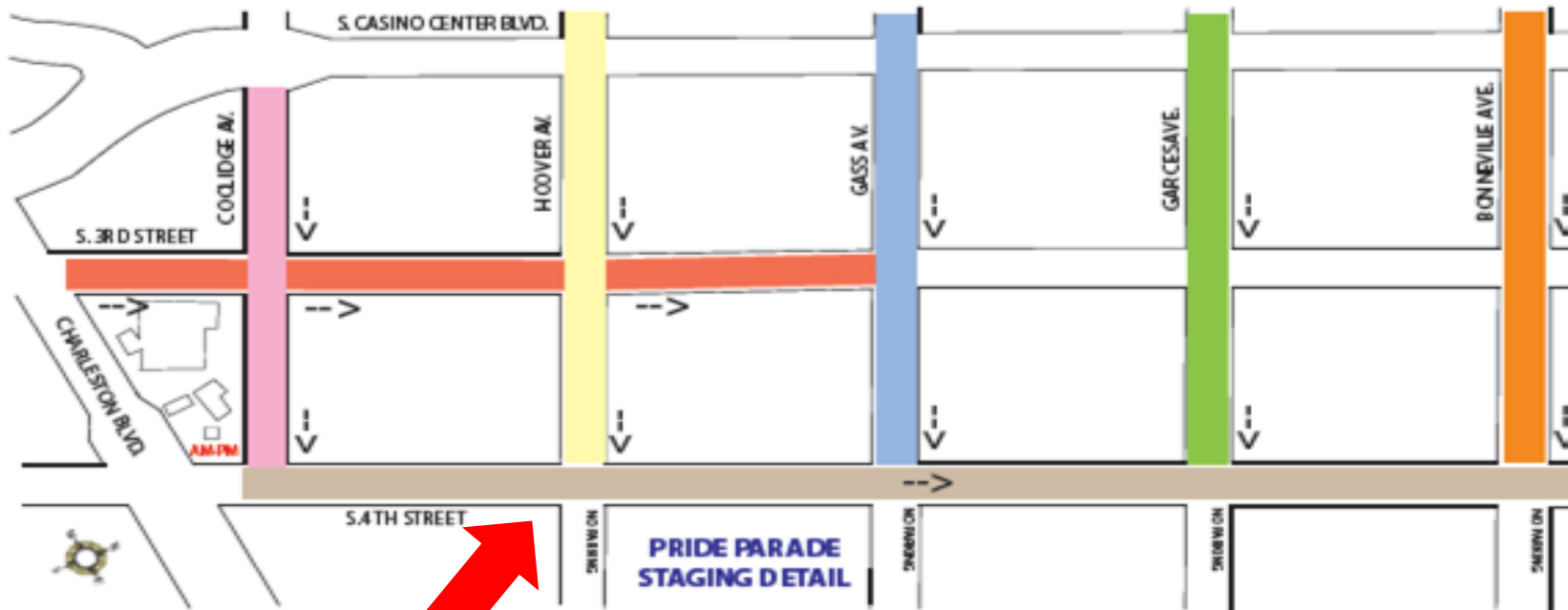
Contingent Liaisons

- ❖ Wheel Walkers / Contingent Leader
 - ❑ Wheel Walkers - guides for float drivers on the parade route
 - ❑ Contingent Leader - leads for each walking group
 - ❑ 1 Leader for every 25 people in the group

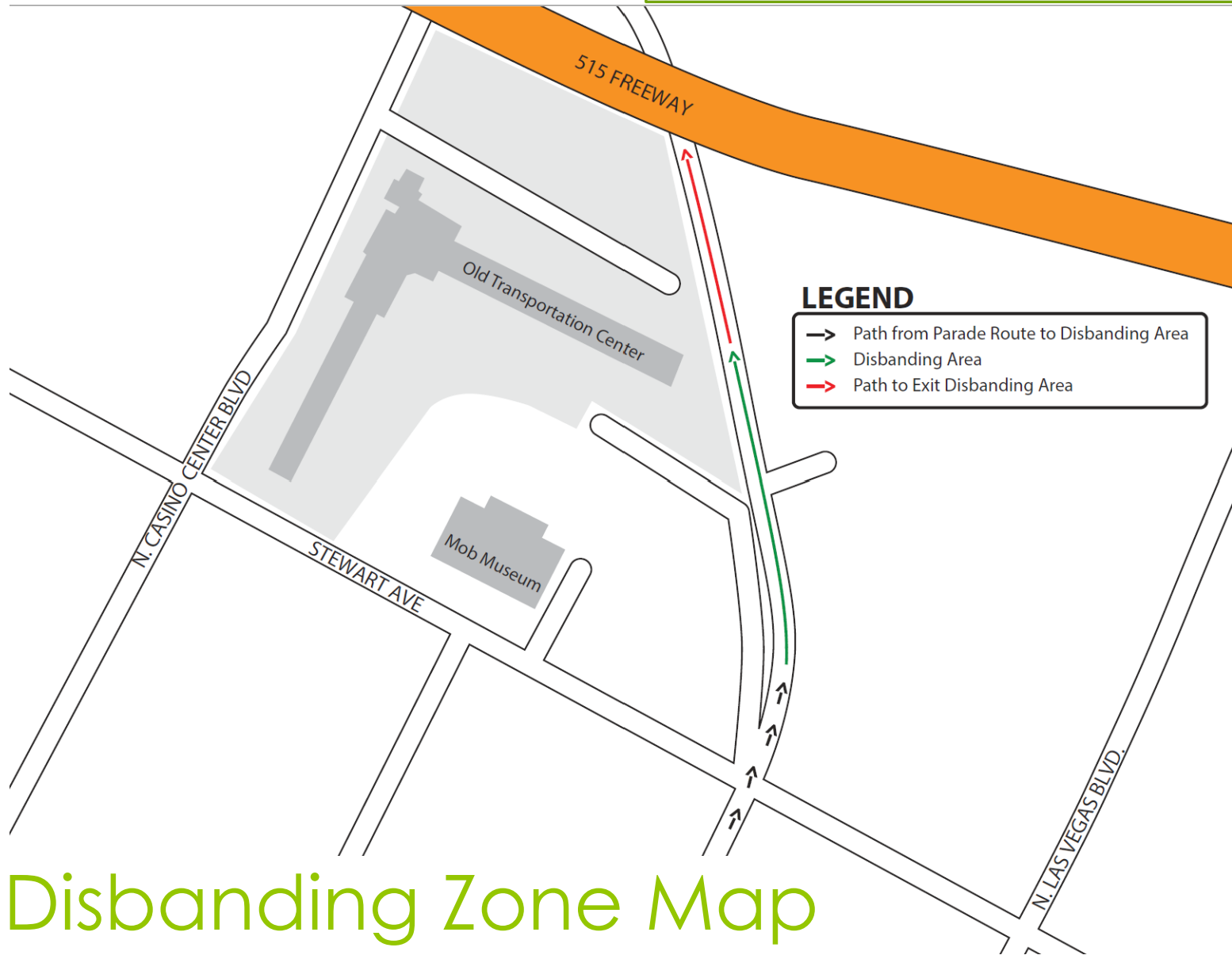
**Wheel
Walker**

**Contingent
Leader**

Push Out



Check-in



Disbanding Zone Map

Parade Rules

- ❖ **Application & Entry Fees** – All parade applications and admin fees must be received and paid in full by October 1, 2021. Applications received after the deadline will be placed at the end of the parade lineup.
- ❖ **Entry Size** – Entry size is limited to 50 participants, unless prior approval is obtained in writing from the Las Vegas PRIDE Parade Committee. Entries are limited to 100 feet long, 10 feet wide and 15 feet tall.
- ❖ **Curfew Guidelines** – All participants must carry a current picture identification card from a recognized government entity in order to follow Clark County curfew guidelines

- ❖ **Insurance & Driver's License** – Each vehicle that enters the parade line-up area and/or participates in the parade must have liability insurance, and its driver a valid driver's license, copies of which must be submitted to the Parade Committee. If you are renting a vehicle you may turn in all information at parade, check in at 4:00pm on October 8, 2021.
- ❖ **Emergency Traffic Lanes** – Emergency traffic lanes must always remain open. These lanes exist in both the staging area and on the parade route and are clearly marked. It is unlawful to park vehicles, decorate units, practice routines, wait or encumber these emergency lanes in any manner at any time.
- ❖ **Drugs & Alcohol** – Drugs and alcoholic beverages are strictly prohibited in the entire pre-parade assembly area, as well as on the parade route. Participants who are found to have any drugs or alcohol in their possession or found to be under the influence of such, will be removed and their unit will be disqualified from award contention. Please discourage your participants from consuming any alcohol or drugs prior to, or during, the parade.

- ❖ **Parade Handouts / Throwing Items From Your Unit** – Due to the danger of physical injury, insurance requirements and littering problems/fines, and disregard of safety regulations by previous parade entrants, all parade participants are forbidden from throwing/handing out anything from their unit. Likewise, participants must not, in any fashion, encourage viewers to come out onto the parade route.
- ❖ **Performances** – Performances that require your unit to stop or slow down and perform are subject to the following restrictions: (1) performances can only occur at the designated locations to be provided to you in your confirmation package; and (2) performances cannot last longer than 2 minute. Violations of this restriction are cause for removal. Pre- Approval is required
- ❖ **Overcrowded Vehicles** – SNAPI reserves the right to remove persons from any float or vehicular unit, which is determined to be overcrowded to such an extent that the unit may break down or cause injury to participants, volunteers or spectators.

- ❖ **Indemnify & Hold Harmless** – All applicants are responsible for any and all acts and/or omissions on their part, or on the part of their agents, volunteers and/or employees that may result in the injury or damage to themselves their agents, employees, or to third parties. Applicant specifically agrees to indemnify and to hold Southern Nevada Association of PRIDE, Inc., it's agents, servants and employees free and harmless and to defend it/them from any and all claims arising out of any such acts or omissions.
- ❖ **Nudity & Obscenity** - Nudity and/or obscenity will not be permitted. Any unit, or the participants thereon, not in compliance will be removed from the parade route, be subject to intervention by law enforcement officials and/or forfeit their chances to participate in future parades.
- ❖ **Noise** – Due to noise abatement laws, units are limited to a 5-minute sound check while in the Parade staging area.

- ❖ **Check-In** – Check-In will start at 4:00pm and end at 6:30pm. Any entry checking in after 6:30pm will be bumped to the end of the parade line up.
PLEASE NOTE THAT PUSH OUT WILL BEGIN AT 7:00PM AND ALL ENTRIES MUST BE READY BY THIS TIME.
- ❖ **Verification** – A member of the parade committee will verify your application is complete and all fees are paid before assigning you a line up position. Paperwork should be completed prior to the mandatory parade meeting. A member of the Parade Committee will contact you via email should your application need additional information for consideration.
- ❖ **Setup** – You are responsible for all the items that you brought with you, and you must take them with you when you leave. Please remember, the parade finishes at a location different than the staging area. If you are decorating your entry, please remember to bring all materials you need, SNAPI will not provide forgotten/missing materials for your entry's decor.

- ❖ **Entry Numbers** – Entry numbers will be provided by the parade committee and will be used by emcee's and judges to correctly identify your entry. Please place your entry number on the front right side of your entry as follows:
 - ❖ Walking Banner: in front of entry, right side of banner
 - ❖ Decorated Vehicle: right side of front windshield
 - ❖ Decorated Floats: front right side of your float
- ❖ **Signs & Banners** – In order to better facilitate parade announcements, a sign or banner providing the name of the organization/business must precede each entry participating in the parade or the entry should have the name prominently displayed on their vehicle. The parade position number presented during check in must be attached to your banner or vehicle window or carried by your designated parade liaison, whichever is most visible to announcers and video cameras.

- ❖ **Marching Together** – Groups desiring to march with other groups must make this known to the parade committee chairperson by submitting an email to parade@lasvegaspride.org. All requests for such arrangements will be met to the best of our ability but are not guaranteed. No unit is allowed to participate alone or as part of another unit without pre-parade registration with SNAPI. Any unit “crashing” the parade will be removed immediately.
- ❖ **Be Prepared For Step Off** – All units must be ready to move, on cue into the parade or the next unit will proceed. The delayed unit will proceed only at the next convenient time as determined by SNAPI parade starter.
- ❖ **Vehicles** – All vehicles must have someone always present at each vehicle with a key in case the vehicle must be moved. All vehicles are required to be in good operating condition, able to navigate the entire parade route, and able to negotiate all turns.

- ❖ **Vehicle Breakdown** – Towing charges for any unit that breaks down will be at the applicant's expense. Any fees associated with repairs, or law enforcement citations are the responsibility of the person signing the parade application.
- ❖ **Flow of Parade** – All entries/entrants are required to maintain a continuous forward motion during the parade. no stopping unless directed by SNAPI staff or at the designated performance area at the Cox broadcast zone. Entries may only stop and perform for one minute. Parade monitors will assist in maintaining a consistent flow of traffic for the duration of the parade. No gaps between parade contingents of more than 20 feet, PLEASE.

- ❖ **Wheel Walkers / Contingent Leader** – All units are required to supply liaisons to SNAPI.
- ❖ All units with moving vehicles must supply a wheel-walker for each vehicle. Their role is to 1) assist in the safety of those around the vehicle, specifically keeping the area in front of vehicle clear of pedestrians; 2) assist in movement and pacing in the parade of all vehicles and marchers belonging to their unit, and 3) facilitate the progress and safety of the parade in general.
- ❖ Please complete the Designated Parade Wheel Walkers / Contingent Leader form for your entry. Walkers / liaisons will report directly to SNAPI. Any entry without a walkers/liaison will not be able to participate in the parade.

- ❖ **Removal of Participants** – SNAPI reserves the right to remove any persons or unit from the pre-parade assembly area or parade that, in SNAPI's opinion, is offensive, a hindrance to the progress of the parade, places other participants or spectators in physical danger or violates any regulations in this application.
- ❖ **SNAPI Rights** – SNAPI presents the PRIDE Parade for the public as an educational & entertainment event, and reserves all rights as producers. Any reproduction, broadcast, or commercial use of any portion of this event, in whole or in part, in any form is strictly prohibited.
- ❖ **Respect Others** - SNAPI requests that all parade participants show respect for all ages, races, cultures, creeds, gender and sexual orientations and refrain from anything that would demean any segment of our community. SNAPI urges all entrants to maintain a high degree of sensitivity to and compassion for the feelings, values and views of others.

- ❖ **Animals in the Parade** – Any entry considering use of live animals must provide clean up service for all waste created by animals. Waste cannot be left on the streets. You are also required to be preapproved by the parade committee before submitting your application. Pre-approval may be obtained by writing to parade@lasvegaspride.org.
- ❖ **Personal Safety** – All parade participants should be aware of the possibility of heat exhaustion and/or stroke. Each participant should be made aware of the hazards associated with a marching unit and its participation in the parade. All entrants are encouraged to bring water or replenishing fluids. SNAPI does not assume or accept responsibility for the health, well-being, or safety of any parade participant.

Don't Forget

- ❖ Check In between 4:00 and 6:30
- ❖ Number placement - important for Judges & Hosts
- ❖ Please follow all instructions from Parade Monitors and Metro Officers!
- ❖ Have Fun! Show your PRIDE!

Visit LasVegasPRIDE.org OR
Email:

Parade@lasvegaspride.org